

**2021 DEMOGRAPHICS**

1 Mile | 3 Miles | 5 Miles



**Population**

9,621 | 75,748 | 155,675



**Employees**

4,663 | 23,968 | 82,532



**Median Household Income**

\$89,411 | \$111,299 | \$113,297

**FOR LEASE**

15475 Manchester Road | Ballwin, Missouri 63011

1,000 - 4,000 SF on 3+ Acres | Call for Details

**PROPERTY DETAILS**

Great visibility from Manchester Road

Positioned in the heart of West County's primary retail corridor

Strong demographics

Ample parking

Free-standing building

Manchester Road: 46,049 VPD

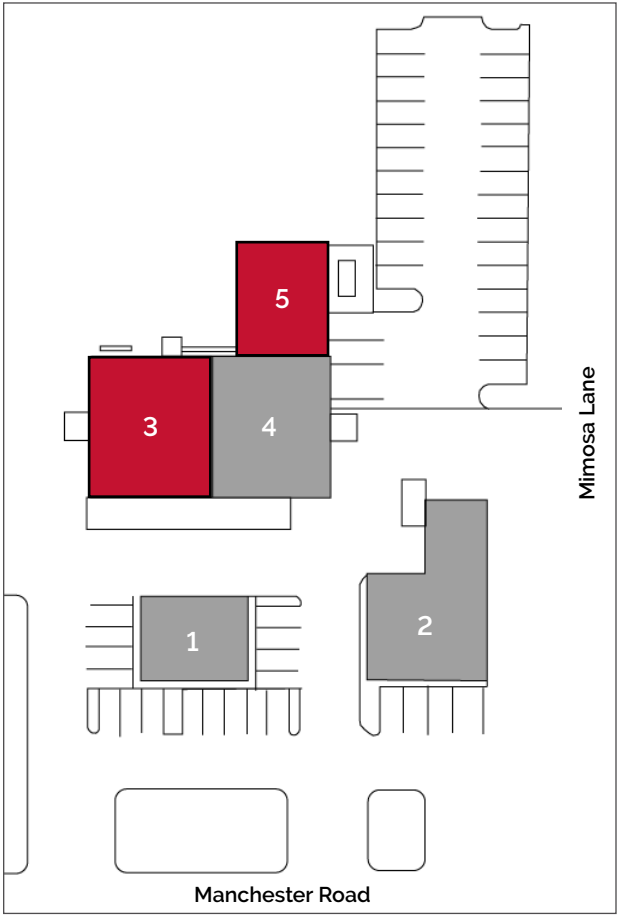
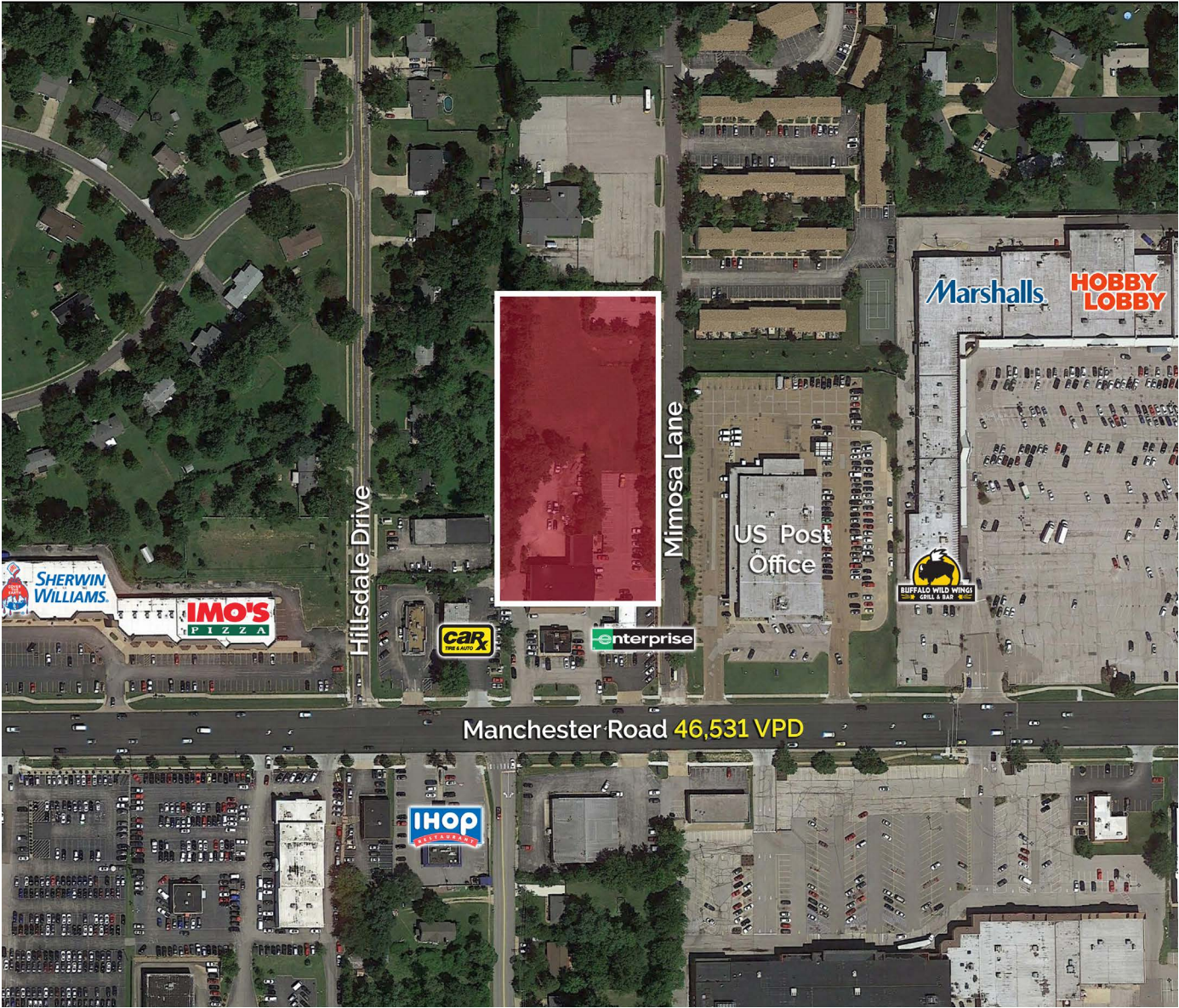
**Patrick Willett**

314.785.7631

[pwillett@paceproperties.com](mailto:pwillett@paceproperties.com)



# Site Plan



Space	Status	SF
1	Bone Auto Glass Specialists	1,575
2	Enterprise Rent-A-Car	2,750
3	<b>AVAILABLE</b>	<b>4,000</b>
4	AAMCO Transmission	4,000
5	<b>AVAILABLE</b>	<b>1,000</b>

The information contained herein is not warranted, although it has been obtained from the owner/landlord of the subject property or from other sources that Pace Properties, Inc. deems reliable, and is subject to change without notice. Owner/landlord and Pace Properties, Inc. make no representations as to the environmental condition of the subject property and recommend tenant's independent investigation.